



Welcome

Ann, Cole, and I would like to invite you to be our guest on Saturday, November 22. Whether you need a bull at this time or not, please feel welcome to come and look and use the catalog and website to see what we're about and what we have to offer.

Selecting for low-input reproduction is a process for most people and it takes time to change our production oriented mindsets. When you develop a cow herd that is not demanding from a nutritional or labor standpoint, there are less problems and more profit. I've never known anyone to move in the low-input direction and then want to go back to the genetics that produce cows that require us to work for them year round harvesting their feed, feeding it back to them, and helping them calve and breed.

Please feel free to contact me at any time by phone, E-mail, or stop by for a visit.

John Dockweiler

John & Ann Dockweiler ~ 28 Redfern Road ~ Chadron, NE 69337
308.432.6938 ~ 308.430.8244
jadangus@bbc.net ~ www.jadangus.com



John & Ann Dockeiler

'Less problems more profit'

Forage Proven Bull Sale

Saturday November 22, 2008

1:00 PM MST

SALE LOCATION: Dawes County Fair Grounds, Chadron, NE (take Main Street north through town).

LIABILITY: Everyone attending the sale does so at their own responsibility and risk and without liability on the part of Dockweiler Angus or their employees.

REFRESHMENTS: Coffee and donuts will be provided in the morning and a complimentary lunch will be served at noon.

INSPECTION: The bulls have been developed entirely on forage with no grain, tubs, licks or cake. We may feed some cake the last 30 days before the sale so that they will know what it is. The bulls will not be clipped. The bulls may be seen any time, prior to the sale, at the ranch. We will have the bulls available for inspection at the Dawes County Fair grounds by 10:00 AM the day of the sale.

FERTILITY: Bulls have been fertility tested by Dr. John Gamby, DVM Panhandle Veterinary Clinic on October 7, 2008.

TERMS & CONDITIONS: The cattle will sell under the standard terms and conditions as recommended by the American Angus Association.

BIDS: The bulls will be penned on site for your inspection but they will not be brought in during the sale. A video clip of each individual animal will be played as it is offered for sale. We will not have an auctioneer. The bids will be accepted in the order that they are recognized. Bidding will progress in \$100 increments. You may submit your absentee bids to John Dockweiler. Your bid will not be misused in any way and your satisfaction upon delivery is guaranteed 100%.

BASE BID: Each bull will be base priced at \$1800 or \$2200. Any bull not selling during the auction will be available for sale at Private Treaty at the Base Price. We will price each bull on the supplemental sheet which will be available a few weeks before the sale. Check the web site or give us a call if you would like that information prior to the sale.

REGISTRATION PAPERS: The bulls sell WITHOUT registration transfer. Our primary focus is the commercial cattle industry. If you need registration transfers please contact us prior to the sale, otherwise let this catalog be your record of individual pedigree and information.

DELIVERY: Free delivery within 300 miles, beyond 300 miles at cost. Delivery will occur as soon after the sale as arrangements can be made. Bring your own trailer and haul your own bulls and we will deduct \$50/bull.

GUARANTEE: We expect that our selection and development of these bulls has provided an excellent product that in most cases will breed more cows for more years than bulls produced from other development and selection criteria.

November is a perfect time to mix new bulls into your bull battery while the breeding season is over and the ground is not yet frozen. Turn these bulls out with your other bulls, keep them from frost damage, and maintain them in reasonable condition and we will guarantee them to semen test in the spring, before turnout, should you decide to do so.

Additionally we are providing a 50% first breeding season guarantee. If your bull suffers a loss of use injury, we will allow credit for ½ the difference between the purchase price and salvage price to be used to purchase another bull at the next sale or by Private Treaty. Example: \$2500 (purchase price) minus \$700 (salvage value) = \$1800 divided by 2 = \$900 credit. You must notify us immediately and have the bull examined and diagnosed by a veterinarian and provide a copy of the receipt for salvage value. Mortality is not covered. If you wish to purchase mortality insurance we can direct you to a reputable agent.

SALE DAY PHONES: 308.430.8244 or 308.430.2882

Frequently Asked Questions:

Q: John, why do you calve in June?

A: Reproduction is by far the most important thing in ranch profitability. The biggest impact on reproduction is condition score at calving. The only way we can achieve acceptable condition score at calving, without putting a lot of expensive petroleum and equipment between the sun and our cows' stomachs is by grazing green grass prior to calving. There is additional research that points to the long photoperiod in June as being beneficial to fertility and we're able to breed in late August and September when the intense heat of summer is already past.

Q: What do you mean when you talk about selecting for low-input reproduction?

A: Selecting for low-input reproduction encompasses many of the unmeasured maternal characteristics such as fertility, the ability to calve, the ability to mother, the ability to forage, the ability to endure stress and drought and winter and immunity challenges and to do all of this with longevity.

Q: If these characteristics are unmeasured, how do you go about selecting for them?

A: I think we have to stop doing some things and start doing some other things. I have had to stop dictating how much milk and production the cattle will have. These things are dictated by the environment. I have had to stop using mainstream genetics that are produced in false environments where maternal characteristics are not understood and are not a priority. On the other hand I have started to become much more observant in my own herd, identifying the cows that exhibit these characteristics and using their sons and daughters to systematically intensify their genetics.

Q: How does line breeding fit into the selection criteria?

A: Line breeding for the sake of line breeding has little value. Line breeding as a byproduct of 'breeding the best to the best regardless of relationship' has value in several ways. It provides a certain genetic order and predictability. It reduces the distracting effect of heterosis, in the parent stock, thereby increasing the accuracy in selection and preserving the potential for hybrid vigor for our commercial customers to take advantage of. Finally, it exposes genetic flaws so that they can be eliminated instead of covered up and passed on.

Q: Why do you develop your bulls on forage?

A: I believe a 'forage proven' bull has been developed in the very best possible way. High energy grain diets are pretty well documented to have negative impacts on feet and joints. Furthermore, by lining the wall of the scrotum with fat, thermoregulation is impaired and fertility suffers. Forage testing allows the bulls to sort themselves out based on fitness and adaptability. If they can't handle the rigors of harvesting their own energy it seems reasonable to assume that their daughters won't excel at 'low input reproduction'.

Q: Is it true that bulls developed on forage are stunted?

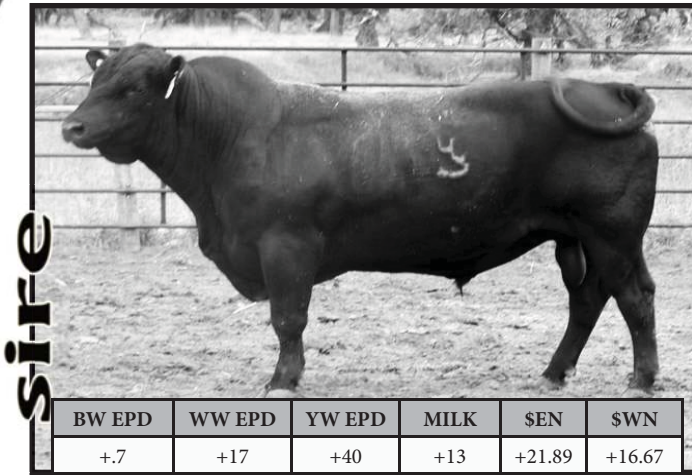
A: No. They are just being grown out at a more natural rate and will continue to grow until they are 3 – 4 years old.

Q: How big are your bulls?

A: Our cows were weighed, measured, and condition scored at weaning last year. After an 18 hour shrink they weighed 1075# at a condition score of 5.3 and a frame score of 5. If you add in a 7% shrink you have an 1150# cow. When these bulls are done growing they should average a 5 frame and sire 1100 – 1200 # cows when in moderate condition.



JAD PRUDENT LAD 6157



JAD PRUDENT LAD 6157 is the first of several maternal half sibs out of SHOSHONE PRUDENCE 6157 that will be used in our herd to intensify the maternal goodness found in the Shoshone Angus strain. As an individual he was simply superb. He was always a perfect gentlemen and respectful, he never cared about fighting but he possessed tremendous libido and was as masculine and virile as any bull I've been associated with. A true breeder bull he exuded quality from his beautiful Angus head to his perfect feet. He was slick-haired, extremely clean sheathed and structurally excellent. His sons are stamped in his image and one of the finest displays of mothering ability I've witnessed was by the first Prudent Lad daughter to calve this spring. We have used 5 sons back in our program and are planning to add at least 3 more. Prudent Lad is deceased and semen is not available.

SHOSHONE EXTENT 3116

SHOSHONE LEXIUS 2950

SHOSHONE LUCY 2950

SHOSHONE LUD 840

SHOSHONE ENKO 157-712

SHOSHONE LUCY 840

SHOSHONE LUCY 801

SHOSHONE ECHO 1702

SHOSHONE 99-2028

SHOSHONE EILEEN 2028

SHOSHONE PRUDENCE 6157

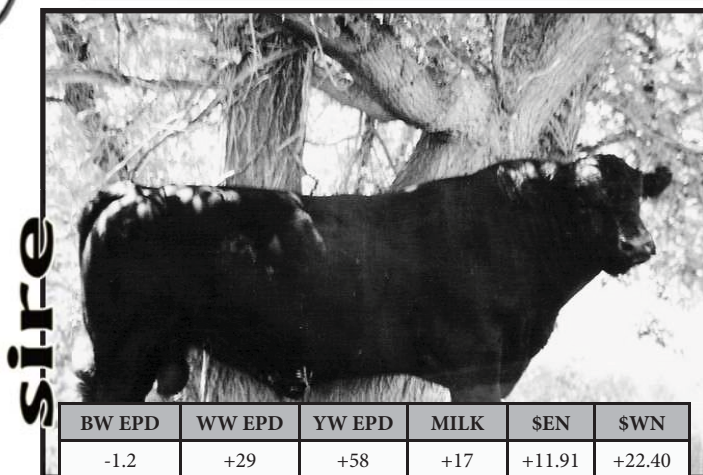
SHOSHONE ECHO 1702

SHOSHONE PRUDENCE 6146

SHOSHONE PRUDENCE ME61-62



N BAR EXTRA B310 A144



N BAR EXTRA B310 A144 has been a perfect fit to go along with our 'less problems more profit' mantra. He's not an extraordinary sire in anyway but he just quietly produces cattle that work time and again. He is a real calving ease bull with 225 calves reported at a 98 ratio. He has 225 calves at weaning with a 99 ratio and 126 calves at yearling with a 101 ratio. Two herds have 50 daughters with 149 progeny that have ratioed 101 at weaning. He was an exceptionally quiet bull that you could walk up to and scratch any time any place and his progeny display that same disposition. Extra is deceased but semen is available at \$15/straw and \$30/certificate.

EMULATION N BAR 5522

N BAR EMULATION EXT

N BAR PRIMROSE 2424

N BAR EMULATION EXT Z52

GARDENS TRANSITION 7205 S1

N BAR CLOVA PRIDE X4170

N BAR CLOVA PRIDE 4818

EMULATION N BAR 5522

N BAR EMULATION EXT

N BAR PRIMROSE 2424

N BAR PRIMROSE Y3051

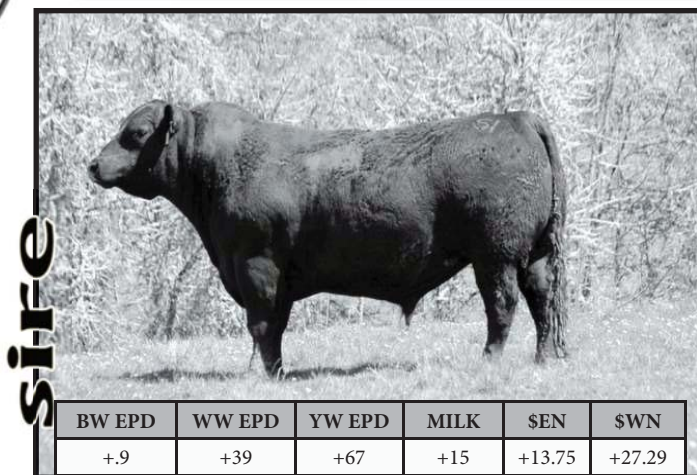
NICHOLS TRADEMARK S1

N BAR PRIMROSE 2429

PRIMROSE N BAR 9962



JAD POCO GRANDE PM73



JAD POCO GRANDE PM73 is co owned with Pharo Cattle Company of Cheyenne Wells, CO and George and Cathy Sandberg of Roseburg, OR. He was the top selling bull in the Spring 2006 PCC sale at Harrison, NE. He was outstanding as an individual. He possessed a great combination of structural correctness with muscle and masculinity. His dam is one of our favorite Cole Creek bred females. We were only able to collect a small amount of semen before he got on the truck heading for Oregon. Semen \$15 Certificates \$30.

Q A S TRAVELER 23-4

D H D TRAVELER 6807

BEMINDFUL MAID D H D 0807

OCC EMBLAZON 854E

PBC 707 1M F0203

DIXIE ERICA OF C H 1019

DIXIE ERICA OF C H 615

R R CHEVIS 3432

COLE CREEK OUTFITTER 1578

COLE CREEK JUANADA NITA 552

COLE CREEK JUMBOLEEN 133N

C H QUANTUM 6247

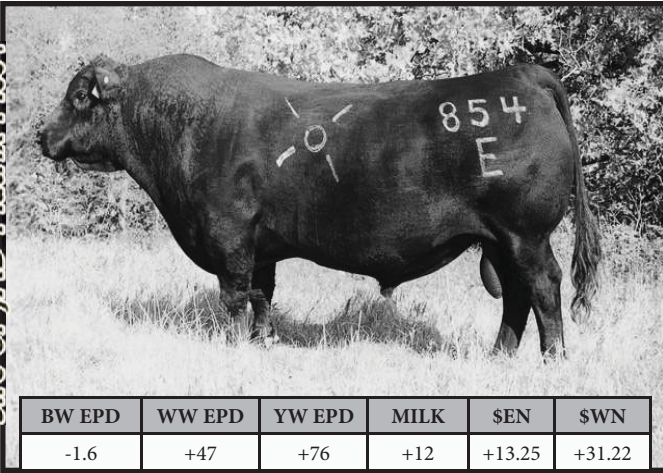
COLE CREEK JUMBOLEEN 0140

COLE CREEK JUMBORITA 428



JAD MATRIX M604

Sire_of_JAD_Matrix_M604



| BW EPD | WW EPD | YW EPD | MILK | \$EN | \$WN |
|--------|--------|--------|------|--------|--------|
| -1.6 | +47 | +76 | +12 | +13.25 | +31.22 |

JAD MATRIX M604 Matrix is co owned with Pharo Cattle Company of Cheyenne Wells, CO and Evan Bligh of Martin, SD. He was the top selling bull in the Fall 2003 PCC sale at Burlington, CO. We brought Matrix back into our herd through A.I. because of the strength of the cows behind him, his structural excellence and his masculinity. He has done an excellent job. Matrix is a sire of calving ease and tremendous performance in a well balanced attractive package. He is a producer of very high quality semen. \$15/straw \$30/certificate.

Q A S TRAVELER 23-4

D H D TRAVELER 6807

BEMINDFUL MAID D H D 0807

OCC EMBLAZON 854E

PBC 707 1M F0203

DIXIE ERICA OF C H 1019

DIXIE ERICA OF C H 615

R R TRAVELER 5204

CALIFORNIA TRAVELER

TEHAMA EISA ERICA Y699

JAD ANNIE 6604

STONE GATE RITO 8849

E BAR V ANNIE 387

E BAR V MISS ANNIE X



COLE CREEK FULL RUT 18M

sire

HBR RITO BRAVO 1441
 HBR ECLIPSE 7116
 SHOSHONE ESTER 3116
 COLE CREEK FULL RUT 299
 JUANADA 7 of P J M
 COLE CREEK JUANADA CAP 882
 COLE CREEK RITA BLACKCAP 20W
 COLE CREEK Q BAR 103T
 COLE CREEK GOLD BAR 37V
 COLE CREEK JUANADAMERE 102T
 COLE CREEK JUANADA 421
 JUANADA 7 of P J M
 COLE CREEK JUANADA 117W
 COLE CREEK RITO 38P

We never got a good picture of FULL RUT. We bought him sight unseen based entirely on Greg Golden's high opinion of the bulls mother who is the 909 cow that has gone on to distinguish herself as one of the all time great Cole Creek cows. She is youthful at 18 years of age and being flushed. Full Rut sires real beef cattle with performance, rib, and muscle and quiet dispositions. He and his little sister have been great additions to our program and illustrate the value of buying cattle from someone who knows their cows and lets the environment sort them. FULL RUT is deceased and semen is limited \$20/straw \$40/certificate

| BW EPD | WW EPD | YW EPD | MILK | \$EN | \$WN |
|--------|--------|--------|------|--------|--------|
| +3.3 | +40 | +62 | +19 | +14.79 | +29.39 |



JAD FULL RUT 3

sire

HBR ECLIPSE 7116
 COLE CREEK FULL RUT 299
 COLE CREEK JUANADA Cap 882
 COLE CREEK FULL RUT 18
 COLE CREEK GOLD BAR 37V
 COLE CREEK JUANADA 421882
 COLE CREEK JUANADA 117W
 D H D TRAVELER 6807
 SITZ TRAVELER 9929
 SITZ EVERELDA ENTENSE 1137
 JAD BARBARA 906
 N BAR EMULATION EXT
 JAD MISS BARBARA 3619882
 JAD MISS BARBARA 1

Full Rut 3 is co-owned with Pharo Cattle Co of Cheyenne Wells, CO and Todd and Jan Deatrich of Maywood, NE. We brought Full Rut 3 back into our herd because of the strength of his dam and grandam. They were good uddered cows that always produced calves with low birth weights and excellent performance. Full Rut 3 was just right as an individual. Moderate, easy fleshing, with good thickness, and correctness. He is siring less birth weight than his sire and the same pattern of muscle and volume with plenty of length. In 2007 we used 9 straws of semen and got 8 calves so he must have been fertile. Unfortunately he died unexpectedly after his first breeding season. Our semen supply is very limited.

| BW EPD | WW EPD | YW EPD | MILK | \$EN | \$WN |
|--------|--------|--------|------|--------|--------|
| +0 | +31 | +61 | +18 | +12.60 | +24.67 |

DOB: 4/9/07
TATTOO: TK01



JAD LAD TK01



SHOSHONE LUD 840
JAD PRUDENT LAD 6157
SHOSHONE PRUDENCE 6157

OCC ANCHOR 771A
JAD ANNIE K01
JAD MISS ANNIE 5659

This bull blends Shoshone and Ohlde breeding to great advantage. He's always been an eye catcher. Out of our Annie cow family that is consistently fertile and productive.

| BW | WW RATIO | YW RATIO | BW EPD | WW EPD | YW EPD | MILK | \$EN | \$WN |
|----|----------|----------|--------|--------|--------|------|--------|--------|
| 84 | 117 | 114 | +1.8 | +32 | +60 | +17 | +12.64 | +22.17 |



JAD LAD TM08

DOB: 4/15/07
TATTOO: TM08



SHOSHONE LUD 840
JAD PRUDENT LAD 6157
SHOSHONE PRUDENCE 6157

OCC EMBLAZON 854E
JAD ANNIE M08
JAD MISS ANNIE 2

His mother is a deep powerful Emblazon daughter with a good udder. This bull should add great volume, and fleshing ability.

| BW | WW RATIO | YW RATIO | BW EPD | WW EPD | YW EPD | MILK | \$EN | \$WN |
|----|----------|----------|--------|--------|--------|------|--------|--------|
| 84 | 118 | 109 | +1.6 | +36 | +61 | +14 | +14.95 | +24.25 |



JAD LAD TP28

DOB: 4/28/07

TATTOO: TP28

SHOSHONE LUD 840
 JAD PRUDENT LAD 6157
 SHOSHONE PRUDENCE 6157

OCC EMBLAZON 854E
 JAD LILIANNE P28
 SCC MS BEAR 2262



Shoshone X Emblazon X Bear of Wye X OCC Broadside X Emulation
 5522. Pedigree is stacked full of low birth weight, maternal sires.

| BW | WW RATIO | YW RATIO | BW EPD | WW EPD | YW EPD | MILK | \$EN | \$WN |
|----|----------|----------|--------|--------|--------|------|--------|--------|
| 75 | 94 | 102 | +1 | +25 | +53 | +12 | +18.97 | +19.24 |



JAD MATRIX TR19

DOB: 5/15/07

TATTOO: TR19

OCC EMBLAZON 854E
 JAD MATRIX M604
 JAD ANNIE 6604

OCC EMBLAZON 854E
 JAD GARWOOD R19
 JAD MISS ANNIE 7733



Emblazon top and bottom. 604 and 733 are both out of the 64 cow. 604 was a California Traveler daughter and the mother of Matrix. 733 is the best Extra daughter we've produced. Low birth weight, high performance, stout, well bred bull.

| BW | WW RATIO | YW RATIO | BW EPD | WW EPD | YW EPD | MILK | \$EN | \$WN |
|----|----------|----------|--------|--------|--------|------|--------|--------|
| 66 | 108 | 103 | -1.8 | +44 | +70 | +13 | +13.14 | +30.35 |

DOB: 5/15/07
TATTOO: TR42**JAD LAD TR42**SHOSHONE LUD 840
JAD PRUDENT LAD 6157
SHOSHONE PRUDENCE 6157SHOSHONE PIVOT 6159
JAD ANNIE R42
E BAR V ANNIE 9224

2- shots of Shoshone on top of a real production cow. I bought the 9224 cow out of the E Bar V dispersion. After knowing those cows for 8 years, I was able to pick a really great cow out of that program. She is a California Traveler X 6807 and she really produces (4@115). This is a good looking bull with reasonable calving ease and should transmit maternal excellence.

| BW | WW RATIO | YW RATIO | BW EPD | WW EPD | YW EPD | MILK | \$EN | \$WN |
|----|----------|----------|--------|--------|--------|------|--------|--------|
| 73 | 108 | 107 | +7 | +25 | +49 | +18 | +14.95 | +21.83 |

**JAD EXTRA TM35**DOB: 5/18/07
TATTOO: TM35N BAR EMULATION EXT Z52
N BAR EXTRA B310 A144
N BAR PRIMROSE Y3051OCC EMBLAZON 854E
JAD ANNIE M35
JAD ANNIE K03

Extra has been a consistent sire of calving ease, performance, and solid females with exceptionally quiet dispositions. Crossing Emblazon or Anchor with Extra produces excellent cattle.

| BW | WW RATIO | YW RATIO | BW EPD | WW EPD | YW EPD | MILK | \$EN | \$WN |
|----|----------|----------|--------|--------|--------|------|--------|--------|
| 78 | 104 | 103 | +0 | +37 | +68 | +16 | +11.52 | +25.66 |



JAD MATRIX TR60

DOB: 5/18/07
TATTOO: TR60

OCC EMBLAZON 854E
JAD MATRIX M604
JAD ANNIE 6604

JAD FULL RUT II
JAD ANNIE R60
JAD ANNIE M08



Grand dam is the Emblazon mother of Lot 2. The Matrix bull has sired excellent calving ease and performance in a very attractive package. Good thick bull.

| BW | WW RATIO | YW RATIO | BW EPD | WW EPD | YW EPD | MILK | \$EN | \$WN |
|----|----------|----------|--------|--------|--------|------|-------|--------|
| 70 | 108 | 107 | +5 | +47 | +75 | +15 | +9.93 | +29.61 |



JAD FRIARS TM217

DOB: 5/22/07
TATTOO: TM217

FAVOUR OF WYE
FRIARS OF WYE UMF 7996
FLORA OF WYE 7750

BEAR OF WYE UMF 6591
SC C MS BEAR 217
SCC MS EXT 0107



2 Shots of Wye on top of an EXT X 6807 cow. I like this bull and the Wye breeding adds strong maternal attributes to many herds. Should work on heifers.

| BW | WW RATIO | YW RATIO | BW EPD | WW EPD | YW EPD | MILK | \$EN | \$WN |
|----|----------|----------|--------|--------|--------|------|--------|--------|
| 74 | 88 | 91 | -.1 | +19 | +36 | +10 | +25.23 | +18.93 |

DOB: 5/26/07
TATTOO: TR25**JAD EXTRA TR25**

N BAR EMULATION EXT Z52
 N BAR EXTRA B310 A144
 N BAR PRIMROSE Y3051

 OCC EMBLAZON 854E
 JAD ANNIE R25
 JAD ANNIE 923

Extra X Emblazon how can you go wrong? Dam is a 2 year old heifer back out of the 923 cow who is a Sitz Traveler 5556 and the reason I used 5556 as hard as I did. Heifer bull.

| BW | WW RATIO | YW RATIO | BW EPD | WW EPD | YW EPD | MILK | \$EN | \$WN |
|----|----------|----------|--------|--------|--------|------|--------|--------|
| 75 | 94 | 98 | +9 | +34 | +64 | +14 | +14.07 | +22.74 |

**JAD POCO GRANDE TM53**DOB: 5/28/07
TATTOO: TM53

OCC EMBLAZON 854E
 JAD POCO GRANDE PM73
 COLE CREEK JUMBOLEEN

 OCC HINDSIGHT 653H
 JAD ENCHANTRESS M53
 JAD MISS ENCHANTRESS 6687

Good strong bull to use on cows. We only sampled the Poco Grande bull but we have 2 nice sons in the sale offering. The 687 grand dam is a good EXT daughter.

| BW | WW RATIO | YW RATIO | BW EPD | WW EPD | YW EPD | MILK | \$EN | \$WN |
|----|----------|----------|--------|--------|--------|------|--------|--------|
| 85 | 110 | 100 | +2.2 | +39 | +61 | +15 | +14.09 | +25.56 |



JAD EXTRA T64

DOB: 5/28/07

TATTOO: T64

N BAR EMULATION EXT Z52
 N BAR EXTRA B310 A144
 N BAR PRIMROSE Y3051

STONE GATE RITO 8849
 E BAR V ANNIE 387
 E BAR V MISS ANNIE X



His ratios aren't much but his dam is now 14. Her udder is good and she moves free enough to be in the lead when we move cows. She is I believe the last daughter of the Annie X cow at E Bar V who was one of the best in that long-time program. She is the dam of our best Extra cow and the dam of the 604 cow that produced Matrix. Lots of proven genetics here.

| BW | WW RATIO | YW RATIO | BW EPD | WW EPD | YW EPD | MILK | \$EN | \$WN |
|----|----------|----------|--------|--------|--------|------|--------|--------|
| 80 | 84 | 95 | -.2 | +21 | +47 | +11 | +21.58 | +17.86 |



JAD RUT TN41

DOB: 5/29/07

TATTOO: TN41

COLE CREEK FULL RUT 18M
 JAD FULL RUT 3
 JAD MISS BARBARA 906

COLE CREEK FULL RUT 18M
 JAD QUEEN MOTHER N41
 JAD QUEEN MOTHER 849



This is a half brother x half sister mating back to our old Cole Creek Full Rut bull. Full Rut was a sire of muscle, fleshing ability, and quiet, sweet natured daughters. The N41 cow is doing an excellent job.

| BW | WW RATIO | YW RATIO | BW EPD | WW EPD | YW EPD | MILK | \$EN | \$WN |
|----|----------|----------|--------|--------|--------|------|-------|--------|
| 76 | 113 | 108 | +6 | +38 | +68 | +20 | +7.63 | +26.60 |

DOB: 5/29/07
TATTOO: TR14



JAD MATRIX R14



OCC EMBLAZON 854E
JAD MATRIX M604
JAD ANNIE 6604

OCC EMBLAZON 854E
JAD ANNIE R14
JAD ANNIE 7702

Half brother X half sister mating back to Emblazon. The 702 cow is an excellent Extra daughter. R14 the dam of Lot 13 is a 2 year old heifer. Nice heifer bull.

| BW | WW RATIO | YW RATIO | BW EPD | WW EPD | YW EPD | MILK | \$EN | \$WN |
|----|----------|----------|--------|--------|--------|------|--------|--------|
| 75 | 104 | 99 | -.2 | +43 | +69 | +13 | +13.44 | +28.50 |



JAD FRIARS TM267

DOB: 5/30/07
TATTOO: TM267



FAVOUR OF WYE
FRIARS OF WYE UMF 7996
FLORA OF WYE 7750

BEAR OF WYE UMF 6591
S C C MISS BEAR 267
S C C MISS BROADSIDE 087

This is the second Friars X Bear bull in the offering. This one has a full brother working in Bruce and Julie Palmer's herd at Springview, NE. The Grand dam was a Broadside X N Bar Nighthawk so the calving ease runs pretty deep.

| BW | WW RATIO | YW RATIO | BW EPD | WW EPD | YW EPD | MILK | \$EN | \$WN |
|----|----------|----------|--------|--------|--------|------|--------|--------|
| 71 | 102 | 99 | -1.3 | +22 | +41 | +13 | +22.48 | +22.97 |



JAD RUT TN45

DOB: 5/30/07
TATTOO: TN45

COLE CREEK FULL RUT 18M
JAD FULL RUT 3
JAD BARBARA 906

COLE CREEK FULL RUT 18M
JAD MISS BLACKCAP 6689
JAD MISS BLACKCAP 6689



Another double bred Full Rut. N45 is one of my favorite Rut daughters. Her mother is a 12 year old EXT that appears to have a lot of life in front of her. N45 produced a bull last year that went to John and Jolie Stewart at Chadron, NE

| BW | WW RATIO | YW RATIO | BW EPD | WW EPD | YW EPD | MILK | \$EN | \$WN |
|----|----------|----------|--------|--------|--------|------|--------|--------|
| 72 | 100 | 102 | -.1 | +33 | +60 | +17 | +12.64 | +25.11 |



JAD RUT T808

DOB: 5/30/07
TATTOO: T808

COLE CREEK FULL RUT 18M
JAD FULL RUT 3
JAD BARBARA 906

N BAR EMULATION EXT
JAD MISS ANNIE 808
JAD MISS ANNIE 5658



Nice long, thick bull here. His mother is a 10 year old EXT daughter with an excellent udder. This bull demonstrates quite a bit of performance on grass.

| BW | WW RATIO | YW RATIO | BW EPD | WW EPD | YW EPD | MILK | \$EN | \$WN |
|----|----------|----------|--------|--------|--------|------|-------|--------|
| 78 | 106 | 111 | +1.1 | +36 | +66 | +20 | +9.11 | +24.83 |

DOB: 5/31/07
TATTOO: TM77



JAD RUT TM77



COLE CREEK FULL RUT 299
COLE CREEK FULL RUT 18M
COLE CREEK JUANADA 421

SITZ VALUE 7097
COLE CREEK JUMBOLEEN 79N
COLE CREEK JUMBOLEEN 012

Here is a Cole Creek bred bull that will add thickness and muscle to every
soggy steer he sires. These Full Ruts are beef bulls.

| BW | WW RATIO | YW RATIO | BW EPD | WW EPD | YW EPD | MILK | \$EN | \$WN |
|----|----------|----------|--------|--------|--------|------|--------|--------|
| 79 | 99 | 99 | +2.4 | +35 | +60 | +16 | +14.30 | +23.63 |



JAD EXTRA TN02

DOB: 6/1/07
TATTOO: TN02



N BAR EMULATION EXT Z52
N BAR EXTRA B310 A144
N BAR PRIMROSE Y3051

SITZ TRAVELER 10619
JAD BLACKBIRD N02
JAD BLACKBIRD 945

Good calving ease bull with lots of production behind him.
His grandmother was EXT bred and went Pathfinder with her third calf.
She was an easy keeper and fertile. N02 is sired by the Sitz Stubby bull
and he was an udder improver.

| BW | WW RATIO | YW RATIO | BW EPD | WW EPD | YW EPD | MILK | \$EN | \$WN |
|----|----------|----------|--------|--------|--------|------|--------|--------|
| 73 | 106 | 107 | -.9 | +29 | +58 | +20 | +10.59 | +24.30 |



JAD EXTRA TN38

DOB: 6/1/07
TATTOO: TN38

N BAR EMULATION EXT Z52
N BAR EXTRA B310 A144
N BAR PRIMROSE Y3051

OCC EMBLAZON 854E
JAD ENCHANTRESS N38
JAD ENCHANTRESS 951



The EPD's and pedigree suggest he would be a heifer bull but with that 86 pound actual...well you be the judge. Good bull otherwise. N38 always seems to bring in an attractive calf.

| BW | WW RATIO | YW RATIO | BW EPD | WW EPD | YW EPD | MILK | \$EN | \$WN |
|----|----------|----------|--------|--------|--------|------|--------|--------|
| 86 | 106 | 102 | +1.0 | +33 | +59 | +16 | +13.72 | +23.95 |



JAD LAD TR82

DOB: 6/2/07
TATTOO: TR82

SHOSHONE LUD 840
JAD PRUDENT LAD 6157
SHOSHONE PRUDENCE 6157

SHOSHONE PIVOT 6159
JAD ENCHANTRESS R82
JAD ENCHANTRESS N16



Here's a bull bred a lot like Lot #5. Maybe you ought to go ahead and buy them both because it seems like they're always standing right beside each other. They both have a keen look in their heads and have the Shoshone structure I've grown to really appreciate. There's some birthweight on the bottom side of this pedigree. N16 is Full Rut X Rito 9Q4. Good bull to use on cows. Expect really nice females.

| BW | WW RATIO | YW RATIO | BW EPD | WW EPD | YW EPD | MILK | \$EN | \$WN |
|----|----------|----------|--------|--------|--------|------|--------|--------|
| 83 | 98 | 99 | +3.3 | +21 | +42 | +15 | +19.56 | +15.26 |

DOB: 6/4/07
TATTOO: TL10**JAD EXTRA TL10**

N BAR EMULATION EXT Z52
N BAR EXTRA B310 A144
N BAR PRIMROSE Y3051

OCC EMBLAZON 854E
JAD COLENE L10
JAD COLENE 907

Dam is a full sister to the Pharo Cattle Company herdsire
JAD TRAILBLAZER . Grand dam is by Alliance X Ambush X EXT.
Should be a heifer bull.

| BW | WW RATIO | YW RATIO | BW EPD | WW EPD | YW EPD | MILK | \$EN | \$WN |
|----|----------|----------|--------|--------|--------|------|--------|--------|
| 76 | 104 | 103 | -.1 | +36 | +65 | +15 | +13.27 | +25.58 |

**JAD POCO GRAND T849**DOB: 6/4/07
TATTOO: T849

OCC EMBLAZON 854E
JAD POCO GRAND PM73
COLE CREEK JUMBOLEEN

E BAR V OPTIMA TRAVELER
JAD QUEEN MOTHER 849
JAD QUEEN MOTHER 5653

It's kind of funny the way things work. This bull appears to be one of the very best in this offering. His sire was the top selling bull of a large sale. He is working very well in a commercial herd in Oregon. We have very little semen. The Optima Traveler 185 bull was used one season and sold into a commercial herd, no semen was collected and we only have this one daughter, the 849 cow. It makes you wonder how many of the great ones slip through the cracks and spend their whole career in multi-sire pastures breeding commercial cows.

| BW | WW RATIO | YW RATIO | BW EPD | WW EPD | YW EPD | MILK | \$EN | \$WN |
|----|----------|----------|--------|--------|--------|------|-------|--------|
| 83 | 109 | 109 | +1.0 | +38 | +69 | +18 | +9.11 | +25.37 |



JAD EXTRA TL09

DOB: 6/8/07

TATTOO: TL09

N BAR EMULATION EXT Z52
 N BAR EXTRA B310 A144
 N BAR PRIMROSE Y3051

OCC EMBLAZON 854E
 JAD ANNIE L09
 JAD ANNIE 919



The L09 cow looks exactly like a good Emblazon daughter should look. She's a deep bodied, high volume cow. Her mother was an Alliance X Extra cow. So Extra is doubled up twice here. Should work on heifers and be an all around good bull.

| BW | WW RATIO | YW RATIO | BW EPD | WW EPD | YW EPD | MILK | \$EN | \$WN |
|----|----------|----------|--------|--------|--------|------|--------|--------|
| 82 | 108 | 97 | +6 | +38 | +65 | +17 | +11.55 | +27.02 |



JAD EXTRA TM07

DOB: 6/9/07

TATTOO: TM07

N BAR EMULATION EXT Z52
 N BAR EXTRA A344 B310
 N BAR PRIMROSE Y3051

SITZ TRAVELER 10619
 JAD QUEEN MOTHER M07
 JAD QUEEN MOTHER 926



Grand dam is by Sitz Traveler 9929. This has been a good producing line of cows. Last year M07's bull calf got a cheat grass lump so I pawned him off on my Dad. Nice bull to use on heifers.

| BW | WW RATIO | YW RATIO | BW EPD | WW EPD | YW EPD | MILK | \$EN | \$WN |
|----|----------|----------|--------|--------|--------|------|--------|--------|
| 74 | 98 | 93 | -.3 | +28 | +54 | +19 | +12.26 | +23.53 |

DOB: 6/9/07
TATTOO: TM82



JAD RUT TM82



COLE CREEK FULL RUT 299
COLE CREEK FULL RUT 18M
COLE CREEK JUANDA 421

AAR WINDY RIDGE 523
COLE CREEK MARIE 53N
CAR MARIE 886

Cole Creek bred bull to use on cows. He has a small white spot on his chest floor so he cannot be registered. Good thickness and depth.

| BW | WW RATIO | YW RATIO | BW EPD | WW EPD | YW EPD | MILK | \$EN | \$WN |
|----|----------|----------|--------|--------|--------|------|--------|--------|
| 85 | 96 | 94 | +2.8 | +33 | +55 | +18 | +13.71 | +23.08 |



JAD RUT T9224

DOB: 6/11/07
TATTOO: T9224



COLE CREEK FULL RUT 299
COLE CREEK FULL RUT 18M
COLE CREEK JUANADA 421

CALIFORNIA TRAVELER
E BAR V ANNIE 9224
E BAR V ANNIE 224

Dam is the 9224 cow that I bought out of the E Bar V dispersion. I think I got the cow that represented the very best of Eli and Bette Votaw's Angus herd at Wellfleet, NE. This is a beef bull with big ratios and will add muscle and fleshing ability to his calves

| BW | WW RATIO | YW RATIO | BW EPD | WW EPD | YW EPD | MILK | \$EN | \$WN |
|----|----------|----------|--------|--------|--------|------|-------|--------|
| 87 | 114 | 112 | +2.8 | +38 | +70 | +24 | +4.93 | +24.84 |



JAD PINNACLE JAKE TN32

DOB: 6/19/07
TATTOO: TN32

OCC EMBLAZON 854E
JAD PINNACLE JAKE PM84
COLE CREEK JUANADA 28N

N BAR EXTRA B310 A144
JAD GARWOOD N32
JAD GARWOOD K10



Lot 27 Strong pedigree. Emblazon X 28N who is the Cedar out of the great Cole Creek Juanada 421 (909) who is being flushed and at the age of 18 frolics around like a heifer. On the bottom you have N32 whose full brother is breeding JAD heifers as I write, the K10 cow is an excellent Anchor daughter who is out of the grandmother of Matrix and the dam of our 733 and 604 cows. This is a well bred younger bull that should work on heifers.

| BW | WW RATIO | YW RATIO | BW EPD | WW EPD | YW EPD | MILK | \$EN | \$WN |
|----|----------|----------|--------|--------|--------|------|--------|--------|
| 78 | 104 | 101 | -.1 | +28 | +54 | +14 | +16.99 | +22.14 |



JAD PINNACLE JAKE R38

DOB: 7/8/07
TATTOO: TK01

OCC EMBLAZON 854E
JAD PINNACLE JAKE PM84
COLE CREEK JUANADA 28N

HORSE BUTTE 1126 OF 3128
JAD FRANCES R38
SHOSHONE FRANCES 6306



This is the youngest bull in the sale. The bottom side of the pedigree is as good as it gets for truly great females. 1126 is the result of mating Shoshone Encore 6310 to one of his best daughters, Shoshone Ester 3128. Shoshone Frances 6306 is one of the very best cows here, she is sired by Shoshone Pivot back to Egan who is also out of Shoshone Ester 3128. The grand dam of 6306 is out of Shoshone Frances 6357 who is the dam of the Diamond D herd sire Shoshone 130-6357. He's just an average young bull but he has a chance to transmit pretty well.

| BW | WW RATIO | YW RATIO | BW EPD | WW EPD | YW EPD | MILK | \$EN | \$WN |
|----|----------|----------|--------|--------|--------|------|--------|--------|
| 72 | 92 | 95 | +.2 | +24 | +46 | +14 | +19.28 | +21.13 |