



JAD Angus

**John & Ann Dockweiler
28 Redfern Rd.
Chadron, NE 69337
308.432.6938**

www.jadangus.com jadangus@bbc.net

308.432.6938 (H) 308.430.8244 (C)

SALE: The opening day sale will be held at the Dawes County Fairgrounds at 1:00 MST on Friday, December 4th.

VIEWING: Bulls will be located at 215 Pineview Rd., Chadron, NE. They will be penned for easy viewing from 9:00 – 11:30 AM MST on Friday Dec. 4. Videos will be linked on the website prior to the opening day.

PARTICIPATION: Three options:

1. Come look through the bulls and make your selections. Then join us at the fairgrounds at 12:00 PM MST for lunch. You can offer your bid as we proceed through the sale order starting at 1:00 PM MST.
2. Notify us of which lots you are interested in and we will call you when that bull is being sold. You can bid live via telephone.
3. Leave your order with Ann or I and we will have someone bid in your absence.

All bulls will be base priced at \$2500. If two or more are interested in a bull, we will raise the bid in \$250 increments until the bull is sold. If you are the only person interested in the bull you may buy him at the base price.

Whether you attend in person, are on the phone, or leave your bid: this sale is conducted in a straightforward, transparent manner. Bids are never misused in any way and your trust is of utmost importance to us.

SEMEN INTEREST: John & Ann Dockweiler Angus will retain a semen interest on every bull selling.

DELIVERY: The first 300 miles is free, remainder at cost.

HEALTH: All bulls will have passed a semen test. The non-virgin bulls will be tested free of trichomoniasis.

GUARANTEE: The bulls are guaranteed breeders. If they aren't, return them and we will stand behind them 100%. Beyond that we may assist with first breeding season losses on a case by case basis.

FOOD: Ann will have coffee and rolls at the bull pens in the morning and will serve lunch at the fairgrounds.

LIABILITY: Anyone attending the sale does so at their own responsibility and risk, without liability on the part of the owners.



Thank you for your interest in our maternal Angus breeding program. Someone has to raise the bulls that make cows. We embrace that role! Females do 95% of the work on a ranch so it makes sense to use, as at least a portion of the bull battery, strictly maternal bulls.

Maternal selection is entirely different than selection for performance or carcass values. There is no number to describe maternal. Rather it is her overall composition comprised of a suite of mental and physical characteristics that increase a cow's fitness and reduces problems. Cows with fewer problems require less labor and simply last longer.

Longevity is manifested in old cows, but that is not its primary value. Many ranchers routinely cull their older cows regardless of how many years they have left in them. Where longevity pays off commercially is the higher percentage of females that remain in production from any given class of heifers, thereby reducing replacement rates and directly and dramatically impacting the bottom line.

The suggestion, now popular, is to simply use culling as a means of maternal genetic selection. This is short-sighted, expensive, and highly questionable as a genetic improvement strategy. Culling our mistakes and precipitating high fail rates in the hope that what remains will somehow be improved is not a means to true genetic advancement.

Instead, maternal selection must understand that "production levels are self-governed by the environment, that milk levels and carcass values are self-governed by their effect on composition, and that composition has the greatest impact on functional reproductivity. So, improving prepotency of composition once identified seems to be 'priority 1' at ANY preferred production level." Larry Leonhardt

Our maternal role at Dockweiler Angus has been to identify and improve the prepotency of maternal composition, to greatly improve functional reproductivity, and pass that genetic prepotency along to you to unpack to your advantage.

Again, thank you for your interest, and a special thanks to our past customers. Don't hesitate to let me know if there is anything I can do to assist you.

Sincerely,

John Dockweiler



JAD Black Seal G2040

DOB: 04/30/19 • REG: 19684609

Cole Creek Black Seal 1132
COLE CREEK BLACK SEAL 927
 Cole Creek Juanada G 28W

Cole Creek Black Seal 230
 Cole Creek 104 Juanada 35V
 Cole Creek Juanada Lad 81T
 Cole Creek Juanada G 132R

BW	83
WW%	
YW%	105

M C C Logan
JAD EILEEN 2040
 JAD Eileen 2549

Friars of Wye Umf 7996
 Shoshone Prudence 6157

JAD Lad S6306
 JAD Eileen P06

Lot 91: Cow bull. Easy keeper. The sire of 91 is proudly co-owned with Cole Creek Angus. He was selected to improve soundness with his excellent feet and structure, and he is very laid back as well.



JAD Phoenix G2041

DOB: 04/23/19 • REG: 19684596

JAD Pheonix U6157
JAD PHOENIX AT12
 JAD Prudence T12

Shoshone Felix 6310 JOD
 Shoshone Prudence 6157

Horse Butte 1126 of 3128
 Shoshone Prudence 6157

BW	87
WW%	
YW%	101

Cole Creek Goldmere 200
JAD ERICA 2041
 JAD Erica 2559

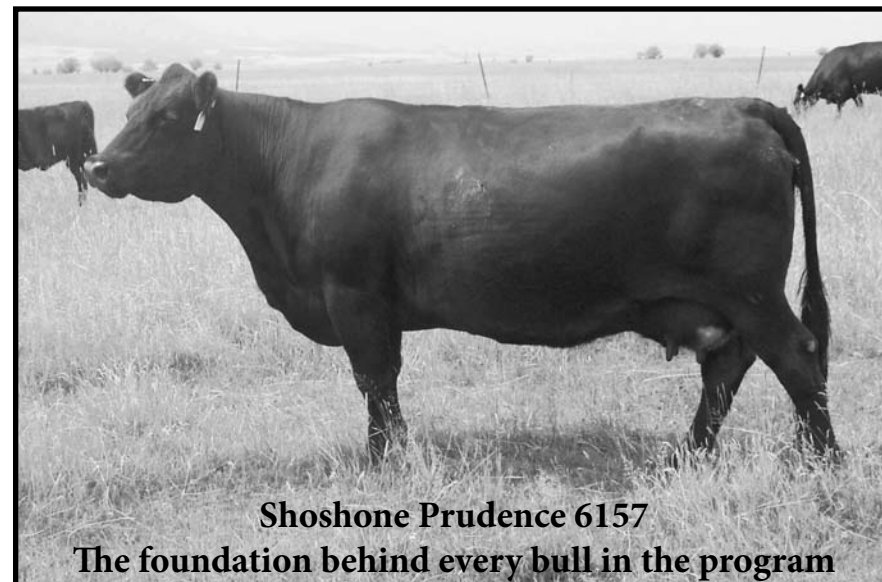
Cole Creek Goldmere 31N
 Cole Creek Juanada Rita 11S

JAD Lad S6150
 JAD Erica P09

Lot 92: Cow bull. The sire of 92 has done a great job and remains completely sound in everyway at the age of 7. He just left this fall to finish his career in Missouri.



JAD Phoenix AT12



Shoshone Prudence 6157

The foundation behind every bull in the program



JAD Elusive G2117

DOB: 05/10/19 • REG: 19684634

JAD Elusive A2549
JAD ELUSIVE E3044
 JAD Miss Blackcap 3044

JAD Paul X158-6157
 JAD Eileen 2549

JAD Luxor YT72
 JAD Miss Blackcap 3420

JAD Prescore Wa743-6157
JAD BARBARA 2117
 JAD Barbara R12

Horse Butte 1126 of 3128
 Shoshone Prudence 6157

OCC Emblazon 854E
 JAD Miss Barbara 6683

BW	83
WW%	89
YW%	94

Lot 93: Cow bull. Moderate framed and thick.



JAD Phoenix G2549

DOB: 04/29/19 • REG: 19708697

JAD Pheonix U6157
JAD PHOENIX AT12
 JAD Prudence T12

Shoshone Felix 6310 JOD
 Shoshone Prudence 6157

Horse Butte 1126 of 3128
 Shoshone Prudence 6157

JAD Lad S6306
JAD EILEEN 2549
 JAD Eileen P06

JAD Prudent Lad 6157
 Shoshone Frances 6306

Shoshone Estigan 764
 Shoshone Eileen 2093

BW	81
WW%	
YW%	89

Lot 94: Cow bull. Dam is excellent, we have used three sons. Lot #94 is a full brother to JAD Evasive D2549.



JAD Esterago G3047

DOB: 05/01/19 • REG: 19684608

JAD Esterago A3128
JAD **ESTERAGO D4941**
JAD Erica 4941

JAD FX T6306
Shoshone Ester 3128

JAD EX-US41
JAD Erica 2209

JAD FX-UR38
JAD Prudence T12

JAD Pregunta YT12
JAD **BARBARA 3047**
JAD Barbara 3530

JAD Lad S6114
JAD Barbara 1208

Lot 95: Heifer bull. CED: +8; BEPD -1.7

BW	67
WW%	95
YW%	95



JAD Phoenix G3110

DOB: 05/13/19 • REG: 19684597

JAD Pheonix U6157
JAD **PHOENIX AT12**
JAD Prudence T12

Shoshone Felix 6310 JOD
Shoshone Prudence 6157

Horse Butte 1126 of 3128
Shoshone Prudence 6157

JAD Pheonix U6157
JAD **JUANADA 3110**
Cole Creek Juanada 28N

Shoshone Felix 6310 JOD
Shoshone Prudence 6157

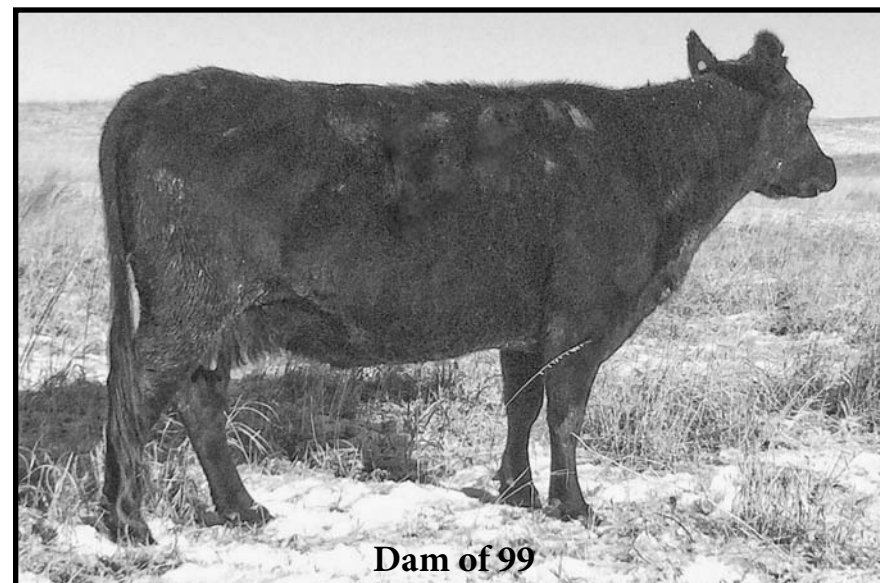
CH Quantum 6247
Cole Creek Juanada 421

Lot 97: Cow bull. Double bred Phoenix. Granddam is the 909 cow from Cole Creek Angus that lasted into her twenties.

BW	85
WW%	104
YW%	100



JAD FUNK BT54



Dam of 99



JAD Porter G3660

DOB: 04/15/19 • REG: 19684605

JAD Sudden Z67
JAD **FUNK BT54**
JAD Frances T54

JAD EX T3199
Miss Forever 67 GFAR

JAD Prudent Lad 6157
JAD Frances P07

JAD Pheonix U6157
JAD **PRUDENCE 3660**
JAD Prudence 1728

Shoshone Felix 6310 JOD
Shoshone Prudence 6157

Horse Butte 1126 of 3128
Shoshone Prudence 6157

Lot 99: Cow bull. This bull was used on JAD cows. Dam is outstanding and we intend to flush her when she gets old. I intended to keep this bull but decided to reload with yearlings so here he is!

BW	83
WW%	
YW%	102



JAD Equilibrio G4035

DOB: 05/08/19 • REG: 19684607

JAD Philip Y422-6157
JAD **EQUILIBRIO C2209**
JAD Erica 2209

Shoshone 130-6357
Shoshone Prudence 6157

JAD Lad S2164
Shoshone Erica A344

JAD Erie YS21
JAD **ERICA 4035**
JAD Erica S41

M C C Logan
JAD Ester S21

JAD Prudent Lad 6157
Shoshone Erica A344

Lot 910: Cow bull. And a cow maker bull! Shoshone Erica A344 top and bottom.

BW	82
WW%	103
YW%	99



JAD Phoenix G4063

DOB: 04/29/19 • REG: 19684598

JAD Pheonix U6157
JAD PHOENIX AT12
JAD Prudence T12

Shoshone Felix 6310 JOD
Shoshone Prudence 6157

Horse Butte 1126 of 3128
Shoshone Prudence 6157

JAD Lad S6150
Shoshone Ester 3128

N Bar Extra B310 A144
JAD Lassie Blackbird M01

BW	87
WW%	
YW%	107

JAD Ezra W3128
JAD BARBARA 4063
JAD Blackbird S57

Lot 911: Cow bull. Nice bull with a nice dam. She has length, strength, and capacity in a beautifully feminine package.



JAD Funk G4065

DOB: 05/12/19 • REG: 19684604

JAD Sudden Z67
JAD FUNK BT54
JAD Frances T54

JAD EX T3199
Miss Forever 67 GEAR

JAD Prudent Lad 6157
JAD Frances P07

Shoshone 130-6357
Shoshone Prudence 6157

N Bar Extra B310 A144
JAD Barbara M46

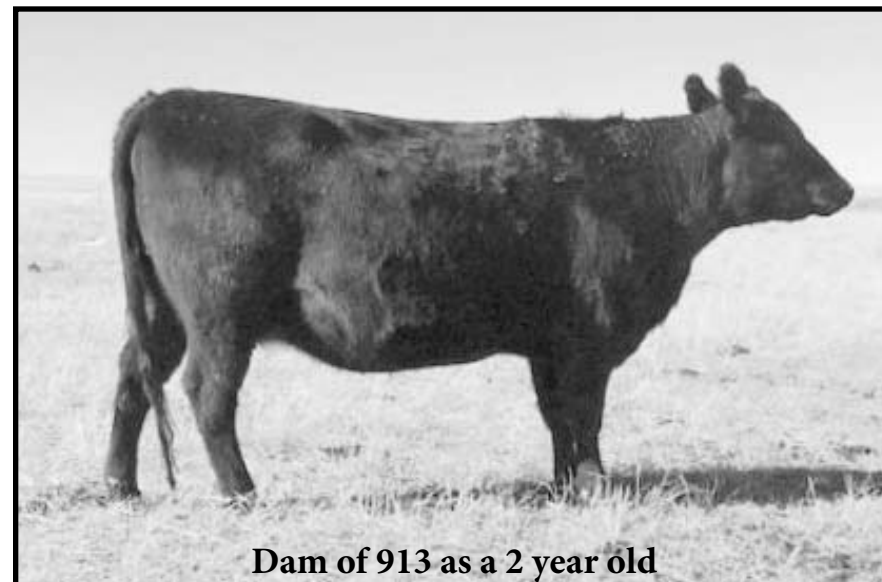
BW	83
WW%	100
YW%	96

JAD Paul X158-6157
JAD BARBARA 4065
JAD Barbara R63

Lot 912: Cow bull. I expect his daughters will have excellent udder quality.



JAD Esquire D4132



Dam of 913 as a 2 year old



JAD Black Seal G4112

DOB: 05/11/19 • REG: 19684610

Cole Creek Black Seal 1132
COLE CREEK BLACK SEAL 927
Cole Creek Juanada G 28W

Cole Creek Black Seal 230
Cole Creek 104 Juanada 35V
Cole Creek Juanada Lad 81T
Cole Creek Juanada G 132R

JAD Ezra W3128
JAD QUEEN MOTHER 4112
JAD Queenmother 926

JAD Lad S6150
Shoshone Ester 3128
Sitz Traveler 9929
E Bar V Queen Mother 208

BW	89
WW%	106
YW%	107

Lot 913: Cow bull. His dam is a half sister to 911's and both cows are powerful yet feminine.



JAD Phoenix G4132

DOB: 05/26/19 • REG: 19684599

JAD Pheonix U6157
JAD PHOENIX AT12
JAD Prudence T12

Shoshone Felix 6310 JOD
Shoshone Prudence 6157

Horse Butte 1126 of 3128
Shoshone Prudence 6157

JAD Erister ZS41
JAD ESTER 4132
JAD Ester 2127

JAD Phylis W6157
JAD Erica S41

JAD Prescore Wa743-6157
JAD Ester S21

BW	
WW%	92
YW%	94

Lot 914: Cow bull. This bull was used on JAD cows. We didn't find him in time to take a birth weight. Could possibly be used on heifers by pedigree. This line of Ester cows has been very influential here. Dam has a perfect udder.



JAD Esquire G4133

DOB: 04/19/19 • REG: 19684624

JAD Phriars W708-6157

JAD ESQUIRE D4132

JAD Ester 4132

JAD Justice Z176

JAD SHONITA 4133

JAD Shonita 2130

Friars of Wye Umf 7996

Shoshone Prudence 6157

JAD Erister ZS41

JAD Ester 2127

JAD Phylis W6157

Cole Creek Juanadamere 102R

JAD Prescore Wa743-6157

JAD Shonita S70

BW	78
WW%	
YW%	102

Lot 915: Could be used on heifers with some caution. CED: +6; BEPD -.1



JAD Evasive G4135

DOB: 05/12/19 • REG: 19708408

JAD Phoenix At12

JAD EVASIVE D2549

JAD Eileen 2549

JAD Pheonix U6157

JAD Prudence T12

JAD Lad S6306

JAD Eileen P06

JAD Erister ZS41

JAD ANNIE 4135

JAD Annie 2154

JAD Phylis W6157

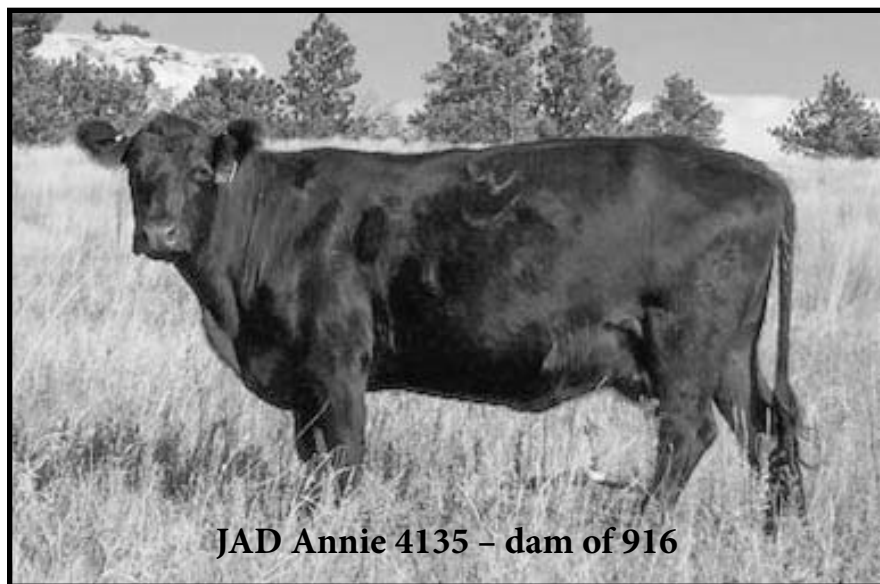
JAD Erica S41

JAD Phriars W708-6157

JAD Annie 4460

BW	89
WW%	104
YW%	102

Lot 916: Cow bull. His dam is a very nice Erister daughter.



JAD Annie 4135 - dam of 916



Lot 917 - JAD Funk G4158



JAD Funk G4158

DOB: 04/21/19 • REG: 19684621

JAD Sudden Z67

JAD FUNK BT54

JAD Frances T54

JAD EX T3199

Miss Forever 67 GFAR

JAD Prudent Lad 6157

JAD Frances P07

JAD Philip Y422-6157

JAD ANNIE 4158

JAD Annie 5681

Shoshone 130-6357

Shoshone Prudence 6157

JAD Ezra W3128

JAD Annie T07

BW	89
WW%	
YW%	101

Lot 917: Cow bull. His dam raises bulls and this one is no exception. Big, strong bull!



JAD Phoenix G4201

DOB: 04/23/19 • REG: 19684618

JAD Pheonix U6157

JAD PHOENIX AT12

JAD Prudence T12

Shoshone Felix 6310 JOD

Shoshone Prudence 6157

Horse Butte 1126 of 3128

Shoshone Prudence 6157

JAD Fremont Z6306

JAD JUANADAMERE 4201

Cole Creek Juanadamere 94V

JAD EX T3199

Shoshone Frances 6306

Cole Creek Not Afraid 7S

Cole Creek Juanadamere 102R

BW	75
WW%	
YW%	94

Lot 918: Heifer bull with some caution. CED: +7, BEPD -.5 Our Fremont daughters are fertile and hard working.



JAD Phoenix G4202

DOB: 04/30/19 • REG: 19684617

JAD Pheonix U6157
JAD PHOENIX AT12
 JAD Prudence T12

Shoshone Felix 6310 JOD
 Shoshone Prudence 6157

Horse Butte 1126 of 3128
 Shoshone Prudence 6157

JAD EX T3199
 Miss Forever 67 GFAR

N Bar Extra B310 A144
 JAD Annie N09

BW	85
WW%	
YW%	103

JAD Sudden Z67
JAD ANNIE 4202
 JAD Annie 1318

Lot 919: Cow bull. We make our largest cull on these bulls at birth. We don't save any bulls out of cows with suspect udders or structure or temperament. And we're not tempted later when the calf is a knockout because he's already a steer. Buy with confidence.



JAD Esquire G4204

DOB: 05/10/19 • REG: 19684631

JAD Phriars W708-6157
JAD ESQUIRE D4132
 JAD Ester 4132

Friars of Wye Umf 7996
 Shoshone Prudence 6157

JAD Erister ZS41
 JAD Ester 2127

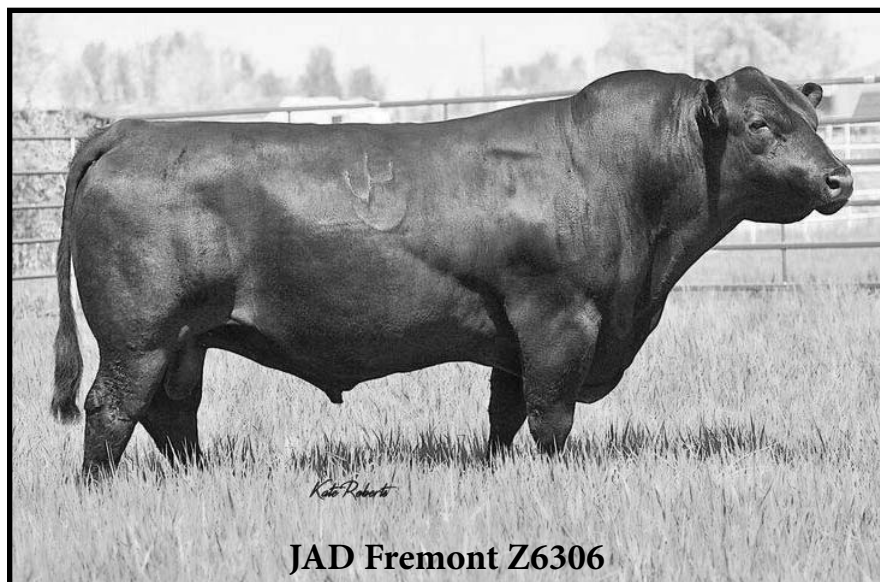
JAD EX T3199
 Shoshone Frances 6306

JAD Prudent Lad 6157
 JAD Barbara N13

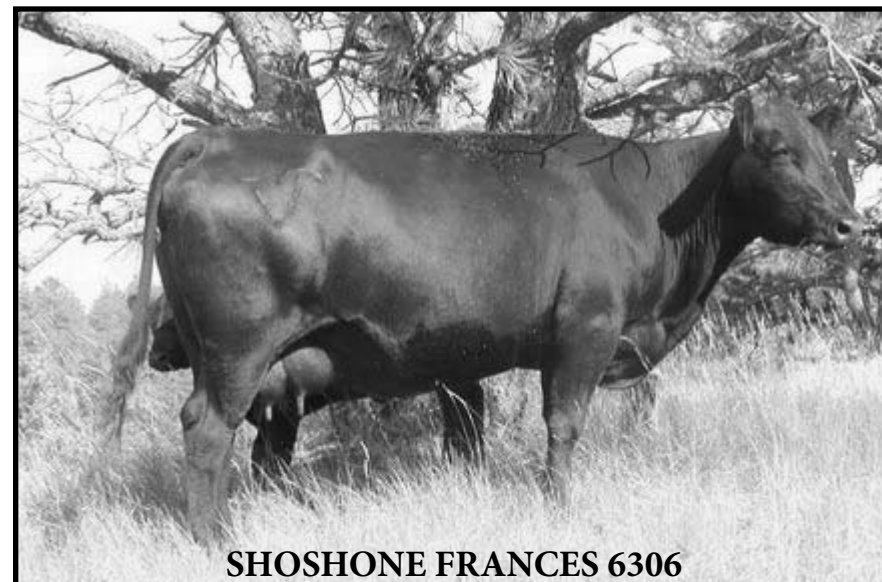
BW	81
WW%	99
YW%	101

JAD Fremont Z6306
JAD BARBARA 4204
 JAD Barbara 1338

Lot 920: Cow bull. You may not take the time to study out all these pedigrees to appreciate the depth of consistent selection and linebreeding, but it is there, and it is valuable. For instance, this bull traces to Shoshone Prudence 6157, nine times.



JAD Fremont Z6306



SHOSHONE FRANCES 6306



JAD Funk G4208

DOB: 04/23/19 • REG: 19684620

JAD Sudden Z67
JAD FUNK BT54
 JAD Frances T54

JAD EX T3199
 Miss Forever 67 GFAR

JAD Prudent Lad 6157
 JAD Frances P07

JAD Lad S2164 YP06
JAD COLENE 4208
 JAD Colene T61

JAD Lad S2164
 JAD Eileen P06

N Bar Extra B310 A144
 JAD Colene P40

BW	77
WW%	
YW%	101

Cow bull. I really like the bull; fluid in his movement, proud in his carriage, and very high libido. He really wants to go to cows, and it makes him hard to handle. Unless you have a lot of work for him and excellent fences, he may cause some trouble.



JAD Esterago G4631

DOB: 05/10/19 • REG: 19684619

JAD Esterago A3128
JAD ESTERAGO D4941
 JAD Erica 4941

JAD FX T6306
 Shoshone Ester 3128

JAD EX-US41
 JAD Erica 2209

Cole Creek Black Cedar 46P
JAD JUANADAMERE 4631
 Cole Creek Juanadamer 59U

CH Quantum 6247
 Cole Creek Clova Juanada 67
 Cole Creek Juanada Ridge 95R
 JJJ Juanadamer 5207

BW	88
WW%	102
YW%	101

Lot 922: Cow bull. His dam will be 10 in the spring and has performed well for us.



JAD Equilibrio G4941

DOB: 04/26/19 • REG: 19684622

JAD Philip Y422-6157
JAD EQUILIBRIO C2209
 JAD Erica 2209

Shoshone 130-6357
 Shoshone Prudence 6157

JAD Lad S2164
 Shoshone Erica A344

JAD Prudent Lad 6157
 JAD Erica S41

JAD Lad S2164
 Shoshone Erica A344

BW	73
WW%	
YW%	92

JAD EX-US41
JAD ERICA 4941
 JAD Erica 2209

Cow bull. When his dam has a bull, I usually keep it. She is the dam of JAD Esterago D4941 and JAD Erigon F4941. I decided to let this one go. He should leave nice daughters like his Erica maternal ancestry. His sire is proudly co-owned with Arturo Vierheller.



JAD Esquire G5007

DOB: 04/25/19 • REG: 19684625

JAD Phriars W708-6157
JAD ESQUIRE D4132
 JAD Ester 4132

Friars of Wye Umf 7996
 Shoshone Prudence 6157

JAD Erister ZS41
 JAD Ester 2127

JAD Pheonix U6157
 JAD Frances P07

Cole Creek Goldmere 200
 JAD Erica 2559

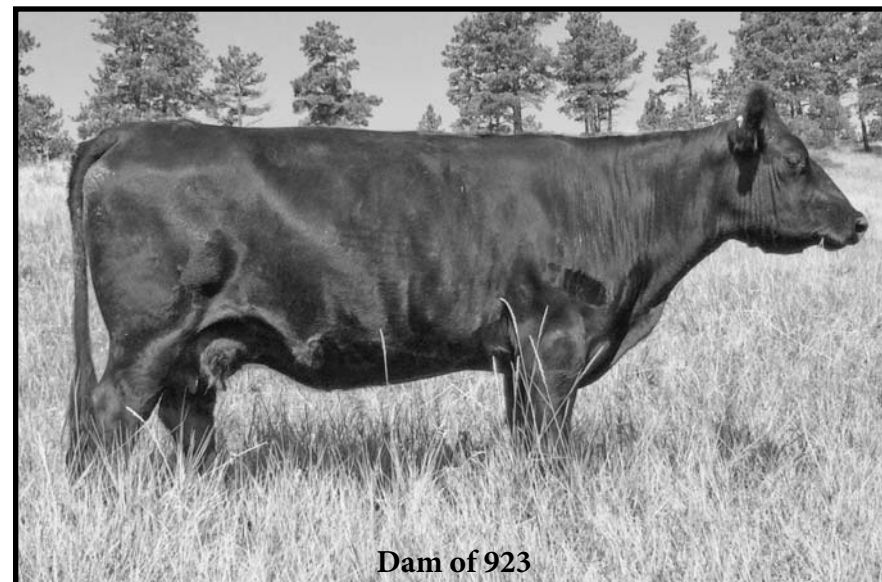
BW	78
WW%	
YW%	98

JAD Flagstaff Ap07
JAD ERICA 5007
 JAD Erica 2041

Lot 924: Cow bull.



JAD Equilibrio C2209



Dam of 923



JAD Black Seal G5028

DOB: 05/26/19 • REG: 19684611

Cole Creek Black Seal 1132
COLE CREEK BLACK SEAL 927
 Cole Creek Juanada G 28W

Cole Creek Black Seal 230
 Cole Creek 104 Juanada 35V

Cole Creek Juanada Lad 81T
 Cole Creek Juanada G 132R

Shoshone Felix 6310 JOD
 Shoshone Prudence 6157

JAD Lad S6306
 JAD Eileen P06

BW	89
WW%	99
YW%	106

JAD Pheonix U6157
JAD EILEEN 5028
 JAD Eileen 2549

Lot 925: Cow bull.



JAD Funk G5032

DOB: 05/01/19 • REG: 19708410

JAD Sudden Z67
JAD FUNK BT54
 JAD Frances T54

JAD EX T3199
 Miss Forever 67 GFAR

JAD Prudent Lad 6157
 JAD Frances P07

JAD Phriars W708-6157
 JAD Annie 5251

JAD Erie YS21
 Miss Forever 67 GFAR

BW	80
WW%	105
YW%	105

JAD Phriars 5251
JAD MISS FOREVER 5032
 JAD Miss Forever 3000

Lot 926: Cow bull. This bull was used on JAD cows. This is a good bull. Twice to Miss Forever 67 GFAR who was lined up to Shoshone Encore 6310. He'll be a solid beef bull.



JAD Evasive G5056

DOB: 04/22/19 • REG: 19708409

JAD Phoenix At12
JAD EVASIVE D2549
 JAD Eileen 2549

JAD Pheonix U6157
 JAD Prudence T12

JAD Lad S6306
 JAD Eileen P06

OCC Emblazon 854E
 JAD Annie 6604

JAD Phriars W708-6157
 JAD Blackbird 5631

BW	76
WW%	
YW%	99

JAD Matrix M604
JAD BLACKBIRD 5056
 JAD Blackbird 3096

Lot 927: Cow bull.



JAD Esterago G5123

DOB: 05/05/19 • REG: 19684623

JAD Esterago A3128
JAD ESTERAGO D4941
 JAD Erica 4941

JAD FX T6306
 Shoshone Ester 3128

JAD EX-US41
 JAD Erica 2209

JAD Phriars W708-6157
 JAD Prudence 6111

JAD Prudent Lad 6157
 JAD Lucy R33

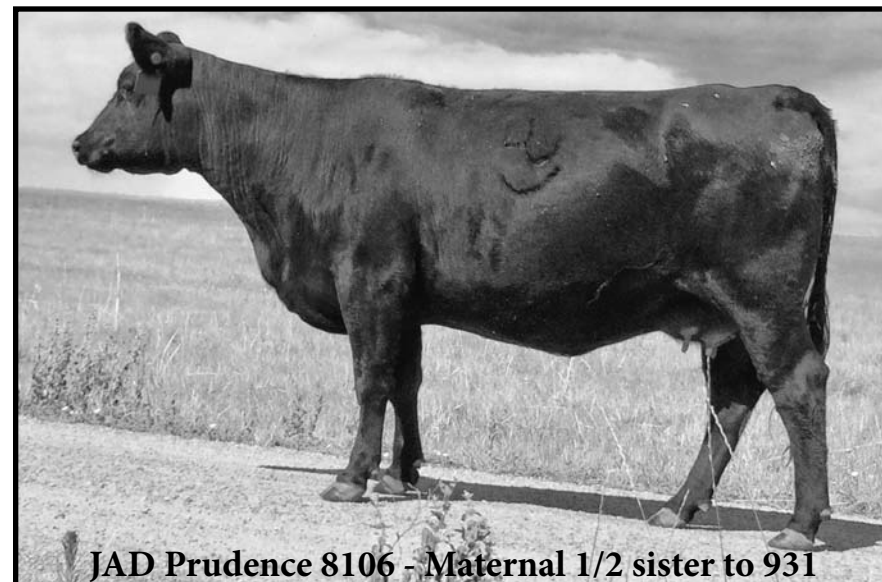
BW	80
WW%	97
YW%	101

JAD Phriars A6111
JAD LUCY 5123
 JAD Lucy T72

Cow bull. This bull was used on JAD cows. He's out of a good cow! Shoshone Prudence 6157 is lined up on the grandparent line through two sons and a daughter. The fourth grandparent line has Shoshone Pivot 6159 and 6157 is his paternal granddam. It's difficult or impossible to find Angus cattle bred like this.



Miss Forever 67 GFAR



JAD Prudence 8106 - Maternal 1/2 sister to 931



JAD Phoenix G5501

DOB: 04/27/19 • REG: 19684616

JAD Pheonix U6157
JAD PHOENIX AT12
 JAD Prudence T12

Shoshone Felix 6310 JOD
 Shoshone Prudence 6157

Horse Butte 1126 of 3128
 Shoshone Prudence 6157

JAD Prudent Lad 6157
 Shoshone Frances 6306

OCC Emblazon 854E
 JAD Miss Annie 7733

JAD FX T6306
JAD GARWOOD 5501
 JAD Garwood R19

Lot 930: Cow bull.

BW	79
WW%	
YW%	95



JAD Flagstaff G6008

DOB: 05/13/19 • REG: 19684628

JAD Flagstaff CR38
JAD FLAGSTAFF E4177
 JAD Frances 4177

JAD Flagstaff Ap07
 JAD Frances R38

JAD Philip Y422-6157
 JAD Frances P07

JAD Pheonix U6157
 Shoshone Frances 6306

Horse Butte 1126 of 3128
 Shoshone Prudence 6157

JAD Firebrand A6306
JAD PRUDENCE 6008
 JAD Prudence 2069

BW	87
WW%	104
YW%	96

Lot 931: Cow bull. This bull was used on JAD cows. Look at the longevity bred into this bull! We just sold P07 this fall at 16 years. We also sold R38 this fall because of the drought even though she was still sound. She was 15 and is out of 6306 who is still alive at Loyning Angus at the age of 19. We sold 6157 at 19, I don't know how long Shoshone Ester 3128 lasted at Horse Butte, but I know that it was a long time.



JAD Fremont G6027

DOB: 04/19/19 • REG: 19684600

JAD EX T3199
JAD FREMONT Z6306
 Shoshone Frances 6306

JAD Prudent Lad 6157
 Shoshone Ester 731-3199
 Shoshone Pivot 6159
 Shoshone Frances 6347

BW	75
WW%	
YW%	106

JAD Erie YS21
JAD BLACKBIRD 6027
 JAD Blackbird 2979

M C C Logan
 JAD Ester S21
 JAD Lad S6114
 JAD Blackbird T45

Lot 932: Cow bull. Maternal breeding at its finest.



JAD Fremont G6035

DOB: 04/13/19 • REG: 19684601

JAD EX T3199
JAD FREMONT Z6306
 Shoshone Frances 6306

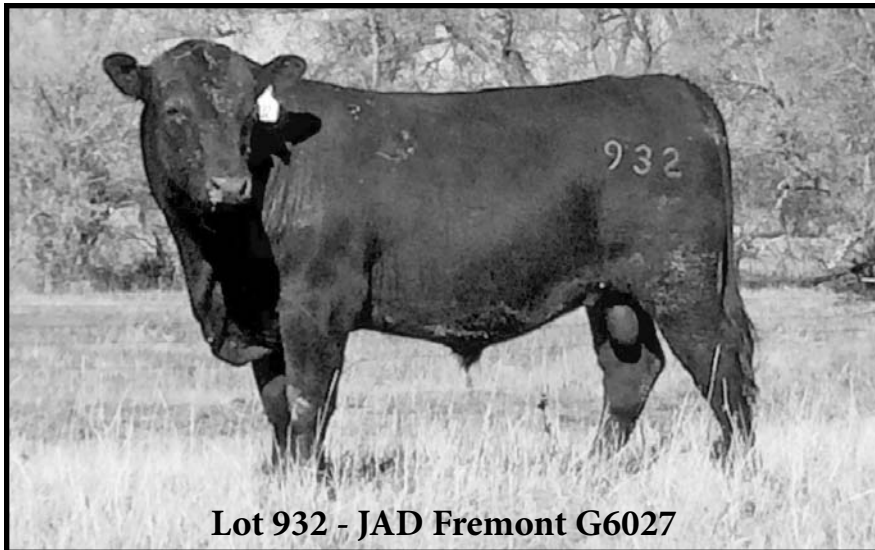
JAD Prudent Lad 6157
 Shoshone Ester 731-3199
 Shoshone Pivot 6159
 Shoshone Frances 6347

BW	77
WW%	
YW%	92

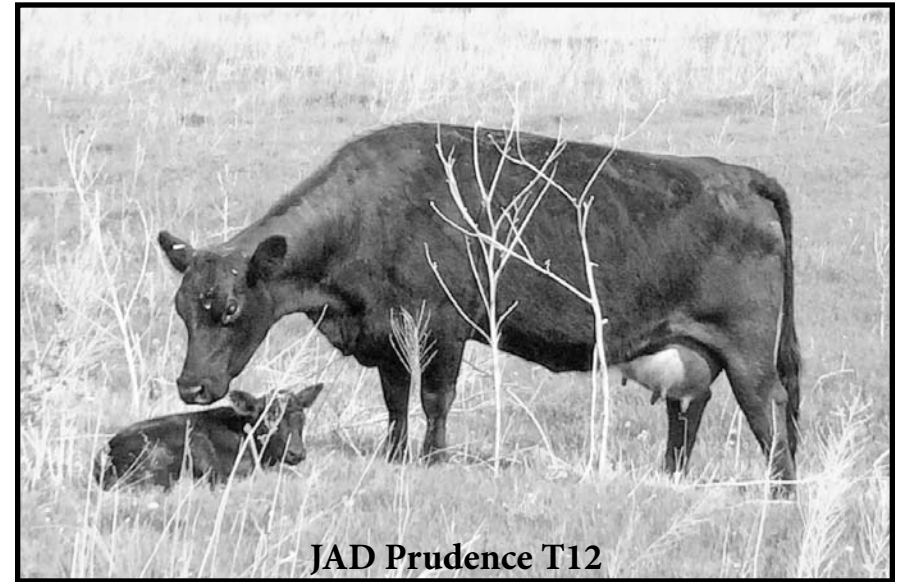
JAD Elusive A2549
JAD BLACKBIRD 6035
 JAD Blackbird 3032

JAD Paul X158-6157
 JAD Eileen 2549
 JAD Prescore Wa743-6157
 JAD Blackbird 2829

Lot 933: Cow bull.



Lot 932 - JAD Fremont G6027



JAD Prudence T12



JAD Fremont G6060

DOB: 04/19/19 • REG: 19684602

JAD EX T3199
JAD FREMONT Z6306
 Shoshone Frances 6306

JAD Prudent Lad 6157
 Shoshone Ester 731-3199
 Shoshone Pivot 6159
 Shoshone Frances 6347

BW	74
WW%	
YW%	106

JAD Flagstaff Ap07
JAD FRANCES 6060
 JAD Frances 3121

JAD Pheonix U6157
 JAD Frances P07
 JAD Ezra W3128
 JAD Frances R38

Lot 934: Cow bull. This bull was used on JAD cows. He could be used on heifers with caution.



JAD Flagstaff G6109

DOB: 05/05/19 • REG: 19684629

JAD Flagstaff CR38
JAD FLAGSTAFF E4177
 JAD Frances 4177

JAD Flagstaff Ap07
 JAD Frances R38
 JAD Philip Y422-6157
 JAD Frances P07

BW	74
WW%	116
YW%	111

JAD Esterago A3128
JAD SHONITA 6109
 JAD Shonita S70

JAD FX T6306
 Shoshone Ester 3128
 N Bar Emulation EXT
 Cole Creek Shonita 18N

Lot 936: Cow bull. High performing bull out of a strong line. Used his sire as a yearling and then sold him. I would like to have him back! This is a good bull out of a good producing line of cows.



JAD Frost G6114

DOB: 05/02/19 • REG: 19684627

JAD Judge C176
JAD FROST E4103
 JAD Frances 4103

JAD Elusive A2549
 Cole Creek Juanadamere 102R

JAD Philip Y422-6157
 JAD Frances R38

Friars of Wye Umf 7996
 Shoshone Prudence 6157

JAD Erie YS21
 JAD Erica S41

JAD Phriars W708-6157
JAD ERICA 6114
 JAD Erica 4035

BW	87
WW%	103
YW%	106

Lot 937: Cow bull. This bull was used on JAD cows. His dam has had three bulls in a row, and all will be used here. She is a sweet little Erica cow!



JAD Q Intensifier G6128

DOB: 04/10/19 • REG: 19689669

CH Quantum 6247
COLE CREEK CEDAR 791
 Cole Creek Clova Juanada 44N

CH Quantum 3330
 CH Blackbird 0136

CH Quantum 3330
 Cole Creek Clova Juanada 263

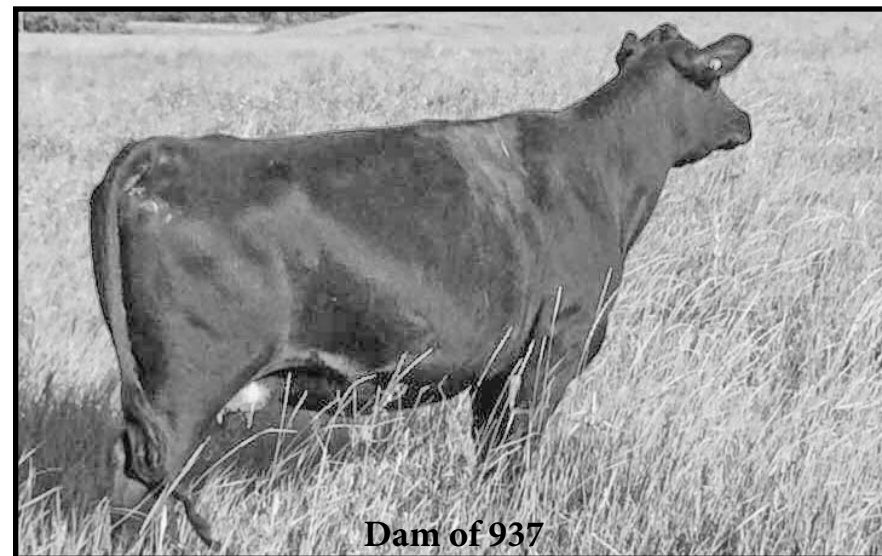
CH Quantum 6247
COLE CREEK JUANADAMERE 102R
 Cole Creek Juanadamere 534

CH Quantum 3330
 CH Blackbird 0136

ZRP Intensifier 0021
 Cole Creek Juanadamere 176X

BW	
WW%	
YW%	100

Heifer bull. This bull was used on JAD heifers. CED: +14; BEPD -1.7 There are 4 of these flush brothers. I remember the first time I saw their dam at Cole Creek Angus and thought she was an ideal model of maternal performance. His sire, Cole Creek Cedar 791 is owned by; Cole Creek Angus, Tim Grygiel, and Darwin Peckham.



JAD Q Intensifer G6138

DOB: 04/11/19 • REG: 19689672

CH Quantum 6247
COLE CREEK CEDAR 791
 Cole Creek Clova Juanada 44N

CH Quantum 3330
 CH Blackbird 0136

CH Quantum 3330
 Cole Creek Clova Juanada 263

CH Quantum 6247
COLE CREEK JUANADAMERE 102R
 Cole Creek Juanadamere 534

CH Quantum 3330
 CH Blackbird 0136

ZRP Intensifier 0021
 Cole Creek Juanadamere 176X

BW	
WW%	
YW%	100

Lot 939: Heifer bull. This bull was used on JAD heifers. CED: +14; BEPD -1.7 Cole Creek Juanadamere 102R or tag #176 was a prolific donor and I have a bunch more of these embryos that we will eventually use. They were nice calves with good thickness and early growth.



JAD Q Intensifier G6151

DOB: 04/15/19 • REG: 19689680

CH Quantum 6247
COLE CREEK CEDAR 791
 Cole Creek Clova Juanada 44N

CH Quantum 3330
 CH Blackbird 0136

CH Quantum 3330
 Cole Creek Clova Juanada 263

CH Quantum 6247
COLE CREEK JUANADAMERE 102R
 Cole Creek Juanadamere 534

CH Quantum 3330
 CH Blackbird 0136

ZRP Intensifier 0021
 Cole Creek Juanadamere 176X

BW	
WW%	
YW%	100

Lot 940: Heifer bull. This bull was used on JAD heifers. CED: +14; BEPD -1.7 As you can see this mating lines up CH Quantum 3330 three times through his double bred son, Cedar 791, and his daughter 176. Linebred, outcross, calving ease genetics!



JAD Flagstaff G6154

DOB: 05/04/19 • REG: 19684633

JAD Flagstaff CR38
JAD FLAGSTAFF E4177
 JAD Frances 4177

JAD Flagstaff Ap07
 JAD Frances R38

JAD Philip Y422-6157
 JAD Frances P07

Friars of Wye Umf 7996
 Shoshone Prudence 6157

Shoshone Lawrence 840
 Shoshone Prudence 6157

BW	82
WW%	97
YW%	94

JAD Phriars W708-6157
JAD PRUDENCE 6154
 JAD Prudence 4217

Lot 941: Cow bull.



JAD Q Intensifer G6163

DOB: 04/01/19 • REG: 19689676

CH Quantum 6247
COLE CREEK CEDAR 791
 Cole Creek Clova Juanada 44N

CH Quantum 3330
 CH Blackbird 0136

CH Quantum 3330
 Cole Creek Clova Juanada 263

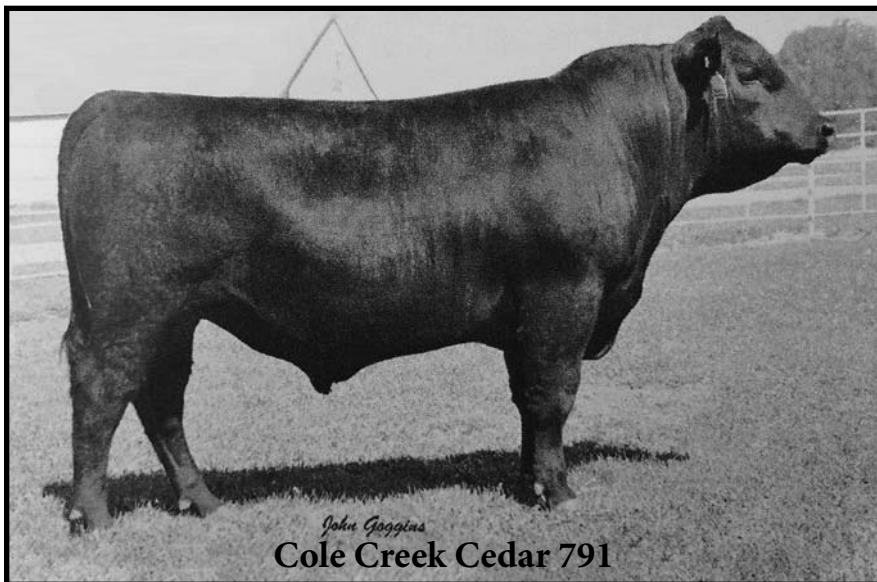
CH Quantum 6247
COLE CREEK JUANADAMERE 102R
 Cole Creek Juanadamere 534

CH Quantum 3330
 CH Blackbird 0136

ZRP Intensifier 0021
 Cole Creek Juanadamere 176X

BW	
WW%	
YW%	100

Lot 942: Heifer bull. This bull was used on JAD heifers. These earlier bulls were born in a snowstorm. I could only get there horseback and wasn't able to take birthweights. We had some more flush mates born this spring. They came early and birthweights were in the mid 60's to the low 70's. They should calve easy.



John Gaggins
Cole Creek Cedar 791



Cole Creek Juanadamere 102R



JAD Timepiece G7004

DOB: 04/26/19 • REG: 19711022

BT Right Time 24J
SINCLAIR IN TIME 6BT39
 N Bar Miss Emulous A404

Leachman Right Time
 Sitz Everelda Entense 1905

N Bar Emulation Ext Z52
 N Bar Miss Emulous X3091

JAD Presence B2219
JAD BARBARA 7004
 JAD Barbara 2062

JAD Prescore Wa743-6157
 JAD Prudence 2219

JAD Phriars W708-6157
 JAD Barbara 3470

Lot 944: Heifer bull. CED: +12; BEPD: -2.9 Nice outcross heifer bull. His sire is owned by, Wm. E & Cheryl Fairbairn, Deborah Reichman, and Sinclair Cattle Co.

BW	63
WW%	93
YW%	101



JAD Timepiece G7019

DOB: 04/24/19 • REG: 19711020

BT Right Time 24J
SINCLAIR IN TIME 6BT39
 N Bar Miss Emulous A404

Leachman Right Time
 Sitz Everelda Entense 1905

N Bar Emulation Ext Z52
 N Bar Miss Emulous X3091

JAD Ezra W3128 B3730
JAD FRANCES 7019
 JAD Frances 3014

JAD Ezra W3128
 JAD Juanadamere 3730

M C C Logan
 JAD Frances 1418

Lot 944: Heifer bull. CED: +11; BEPD: -2.1 Sinclair In Time 6BT39 calved very easily and so far, I'm quite pleased with the bull and heifer calves.

BW	71
WW%	102
YW%	103



JAD Timepiece G7033

DOB: 04/23/19 • REG: 19692807

BT Right Time 24J
SINCLAIR IN TIME 6BT39
 N Bar Miss Emulous A404

Leachman Right Time
 Sitz Everelda Entense 1905
 N Bar Emulation Ext Z52
 N Bar Miss Emulous X3091

BW	65
WW%	96
YW%	103

JAD Ezra W3128 B3730
JAD JUANADA 7033
 JAD Juanada 3110

JAD Ezra W3128
 JAD Juanadamere 3730
 JAD Pheonix U6157
 Cole Creek Juanada 28N

Lot 945: Heifer bull. CED: +11; BEPD: -2.1



JAD Timepiece G7042

DOB: 04/23/19 • REG: 19778581

BT Right Time 24J
SINCLAIR IN TIME 6BT39
 N Bar Miss Emulous A404

Leachman Right Time
 Sitz Everelda Entense 1905
 N Bar Emulation Ext Z52
 N Bar Miss Emulous X3091

BW	72
WW%	
YW%	111

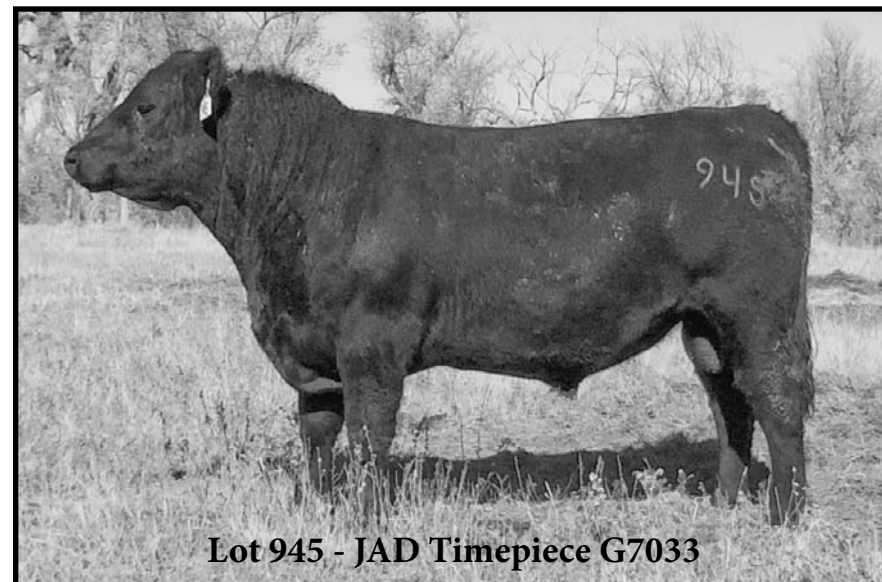
JAD Puritan CS41
JAD ANNIE 7042
 JAD Annie 4006

JAD Phriars A6111
 JAD Erica S41
 JAD Pheonix U6157
 JAD Annie 5341

Lot 946: Heifer bull. CED: +11; BEPD: -2.5



Lot 946 - JAD Timepiece G7042



Lot 945 - JAD Timepiece G7033



JAD 1562 G7051

DOB: 05/05/19 • REG: 19684630

M C C Logan
UJR PRUDENT LOGAN 1562
 UJR Prudence 1261

Friars of Wye Umf 7996
 Shoshone Prudence 6157

JAD Lad S2164 WS21
 JAD Prudence 6100

JAD Ezra CS101
JAD JUANADAMAID 7051
 JAD Juanadamaid 4073

JAD Ezra A2559
 JAD Garwood S101

JAD Paul X158-6157
 JAD Juanadamaid 4881

BW	80
WW%	96
YW%	92

Lot 947: Unassisted out of heifer but the numbers would lean more to using him on cows.
 Sire is proudly co-owned with Upright J Ranch.



JAD Timepiece G7054

DOB: 05/08/19 • REG: 19692794

BT Right Time 24J
SINCLAIR IN TIME 6BT39
 N Bar Miss Emulous A404

Leachman Right Time
 Sitz Everelda Entense 1905
 N Bar Emulation Ext Z52
 N Bar Miss Emulous X3091

BW	74
WW%	101
YW%	94

JAD Ezra CS101
JAD EILEEN 7054
 JAD Eileen 4092

JAD Ezra A2559
 JAD Garwood S101
 JAD Paul X158-6157
 JAD Eileen 2549

Lot 948: Heifer bull. CED: +9; BEPD: -1.4



JAD Timepiece G7091

DOB: 04/24/19 • REG: 19692793

BT Right Time 24J
SINCLAIR IN TIME 6BT39
 N Bar Miss Emulous A404

Leachman Right Time
 Sitz Everelda Entense 1905
 N Bar Emulation Ext Z52
 N Bar Miss Emulous X3091

BW	68
WW%	97
YW%	103

JAD Matrix C3086
JAD FRANCES 7091
 JAD Frances 5036

JAD Matrix M604
 JAD Garwood 3086
 JAD Phriars 5251
 JAD Frances 3014

Lot 950: Heifer bull. CED: +11; BEPD -1.8



JAD Choteau G7073

DOB: 04/23/19 • REG: 19684614

JAD Lad S2164
JAD LAD S2164 WS21
 JAD Ester S21

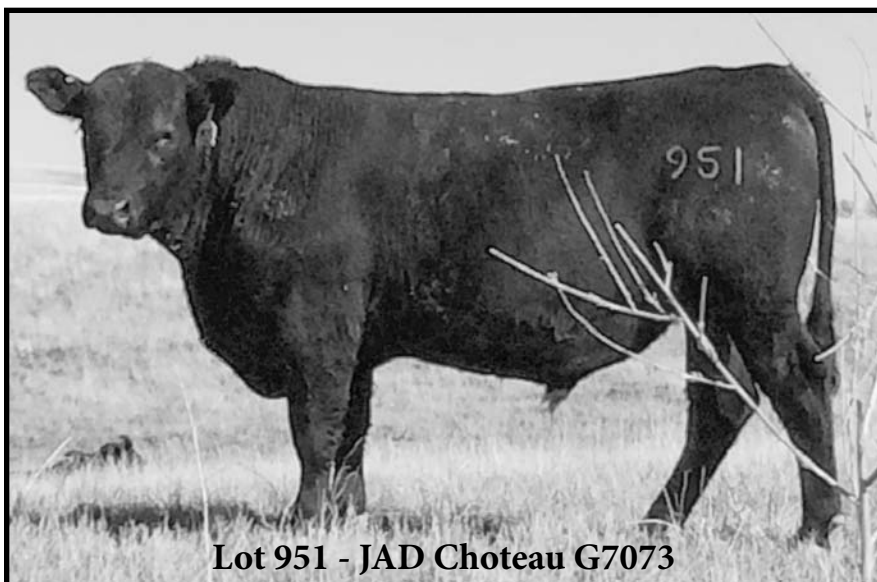
JAD Prudent Lad 6157
 Shoshone Lucy 2164
 JAD Pivotal 6306
 Shoshone Ester 774

BW	
WW%	96
YW%	98

JAD Ezra CS101
JAD BLACKBIRD 7073
 JAD Blackbird 4205

JAD Ezra A2559
 JAD Garwood S101
 JAD Fremont Z6306
 JAD Blackbird S51

Lot 951: Heifer bull. Sorted bred heifers from cows in a fence corner and missed his mother. He was born unassisted to a heifer and was a few days old when I found him. I wrote small in my calving book. He should be a heifer bull.



Lot 951 - JAD Choteau G7073



Lot 53 - JAD Timepiece G7116



JAD Choteau G7068

DOB: 04/27/19 • REG: 19684613

JAD Lad S2164
JAD LAD S2164 WS21
 JAD Ester S21

JAD Prudent Lad 6157
 Shoshone Lucy 2164
 JAD Pivotal 6306
 Shoshone Ester 774

BW	73
WW%	101
YW%	99

JAD Ezra CS101
JAD BARBARA 7068
 JAD Barbara 4142

JAD Ezra A2559
 JAD Garwood S101
 JAD Paul X158-6157
 JAD Barbara 3530

Lot 952: Heifer bull. CED: +4; BEPD: +.2 Born unassisted to a heifer. The computer does not like his sire as a calving ease bull even though he has been proven repeatedly in that regard. We A.I. bred every heifer we had to him, except his own daughters, in 2019.



JAD Timepiece G7116

DOB: 04/23/19 • REG: 19692792

BT Right Time 24J
SINCLAIR IN TIME 6BT39
 N Bar Miss Emulous A404

Leachman Right Time
 Sitz Everelda Entense 1905
 N Bar Emulation Ext Z52
 N Bar Miss Emulous X3091

BW	69
WW%	97
YW%	101

JAD Matrix C3086
JAD SHONITA 7116
 JAD Shonita 5102

JAD Matrix M604
 JAD Garwood 3086
 JAD Elusive A2549
 JAD Shonita 5661

Lot 953: Heifer bull. CED: +12; BEPD: -2.1 Standout In Time son!



JAD Choteau G7147

DOB: 04/25/19 • REG: 19684612

JAD Lad S2164
JAD LAD S2164 WS21
 JAD Ester S21

JAD Matrix C3086
JAD GARWOOD 7147
 JAD Garwood 5089

JAD Prudent Lad 6157
 Shoshone Lucy 2164

JAD Pivotal 6306
 Shoshone Ester 774

JAD Matrix M604
 JAD Garwood 3086

JAD Phriars A6111
 JAD Garwood 4741

BW	60
WW%	107
YW%	100

Lot 954: Heifer bull. CED: +10; BEPD: -2.2 His sire is proudly co-owned with Upright J Ranch. Mike Johnson selected the bull and proved him as an extraordinary calving ease and maternal sire. He is 11 years old now and has never had or needed his feet trimmed.



JAD Black Coal G7127

DOB: 05/23/19 • REG: 19684632

Cole Creek 1100 Black 355
COLE CREEK 355 BLACK 647
 Cole Creek Miss Juanada 172

JAD Matrix C3135
JAD LUCY 7127
 JAD Lucy 5123

Cole Creek Black Cedar 1100
 Cole Creek Juanada G 15W

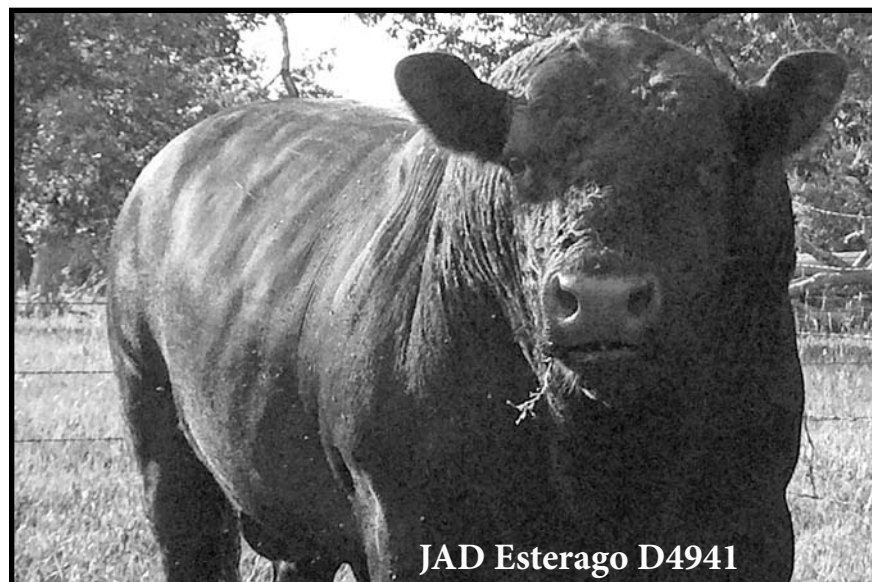
Cole Creek Juanada Gold 92P
 Cole Creek Juanada 102P

JAD Matrix M604
 JAD Lassie Blackbird 3135

JAD Phriars A6111
 JAD Lucy T72

BW	75
WW%	114
YW%	110

Lot 955: Heifer/Cow bull. Could be used on heifers with caution. CED: +5; BEPD: +.6
 Enough growth to put him on cows.



JAD Esterago D4941